



Moorwoods Farm

Moorwood Lane, Holmesfield,
Sheffield S17 3BS



MOORWOODS FARM

SPACIOUS COUNTRY FARMHOUSE WITH LAND AND SPECTACULAR VIEWS

A substantial and strikingly attractive mellow stone-built farmhouse, originally dating back to the early 18th Century and extensively extended over the years. Moorwoods Farm nestles in a tranquil, secluded, and private setting, surrounded by open countryside with glorious panoramic views over the surrounding valley.

The property benefits from a range of additional agricultural buildings, four paddocks, a natural stream, and is offered for sale with a completed chain.

This impressive family home offers generous accommodation, including a lounge, morning room, study, dining room, breakfast kitchen, cloakroom, utility/laundry room, and boiler room. On the first floor, there are six bedrooms, two bathrooms, and a fantastic galleried games room.

The sale of Moorwoods Farm presents a rare, once-in-a-lifetime opportunity. The property, which does require some updating, is entirely surrounded by its own land and paddocks, and is offered with approximately 14.41 acres, with a further 26.15 acres available by separate negotiation.

Enjoying a stunning location off a quiet country lane, yet within easy reach of local amenities, Sheffield city centre, and the M1 motorway network.

An ideal purchase for buyers with equestrian interests, farming ambitions, or those looking to run a business from home.





KEY FEATURES

- Early 18th Century Farmhouse In A Secluded Setting
- Glorious Private Views Over The Valley
- Six Bedrooms / Two Bathrooms
- Completed Onward Chain
- Land of 1441 Acres and A Further 26.15 Acres Available Separately
- Range of Outbuildings including Stables, Machinery Store and Agricultural Buildings
- Natural Stream Flowing Into Totley Brook
- Magnificent Games Room
- Potential Class Q Permitted Development





GROUND FLOOR

Long Entrance Hall, Cloakroom, Conservatory overlooking the front garden, Morning Room with beamed ceiling and Minster stone fireplace with log burner, Study with French window to terrace and charming garden and with beautiful views over the valley.

Dining Room with glorious views, original Gritstone fireplace and beamed ceiling. “Mouseman” hearth fender by the famous Robert Thompson. Breakfast kitchen with good range of units and adjacent dining area.

A lovely proportioned Lounge with superb views, Gritstone fireplace with multifuel stove and large bespoke built in oak Welsh dresser along one wall.

Pantry, Rear Lobby with access to large integral Garage, Utility/Laundry area, further Lobby, Boiler/Storeroom and Separate WC.





FIRST FLOOR

Staircase from Reception Hall leads to First Floor Landing. Principal Bedroom Suite comprising Dressing Area, Large Master Bedroom with exposed beams and range of wardrobes. Lobby giving access to modern Bathroom with full suite and separate shower cubicle. Double Bedrooms Two and Three and Double Bedroom Four with En Suite Shower Room with Full Suite and Access to Landing. Separate WC and wash hand basin. Double Bedroom Five looking over the rear paddock. Double Bedroom Six with exposed oak beam. Box Room giving access to Large Games Room featuring high vaulted ceiling currently with a full-size snooker table, feature exposed stone walls and glorious views. Staircase leads to Lower Ground Floor.



OUTBUILDINGS

Integral Double Garage giving access to the rear lobby and further access to staircase to Games Room.

Second integral Garage – currently used as a Tack Room.

Integral Stable with original three Stables.

Large courtyard

Former Piggery

Bottom Garage / Stable

Four Bay Dutch barn

Further Four Bay Steel Portal Frame
Agricultural Building with Four Further
Stables

Large Open Log Store

Large Detached Machinery Shed



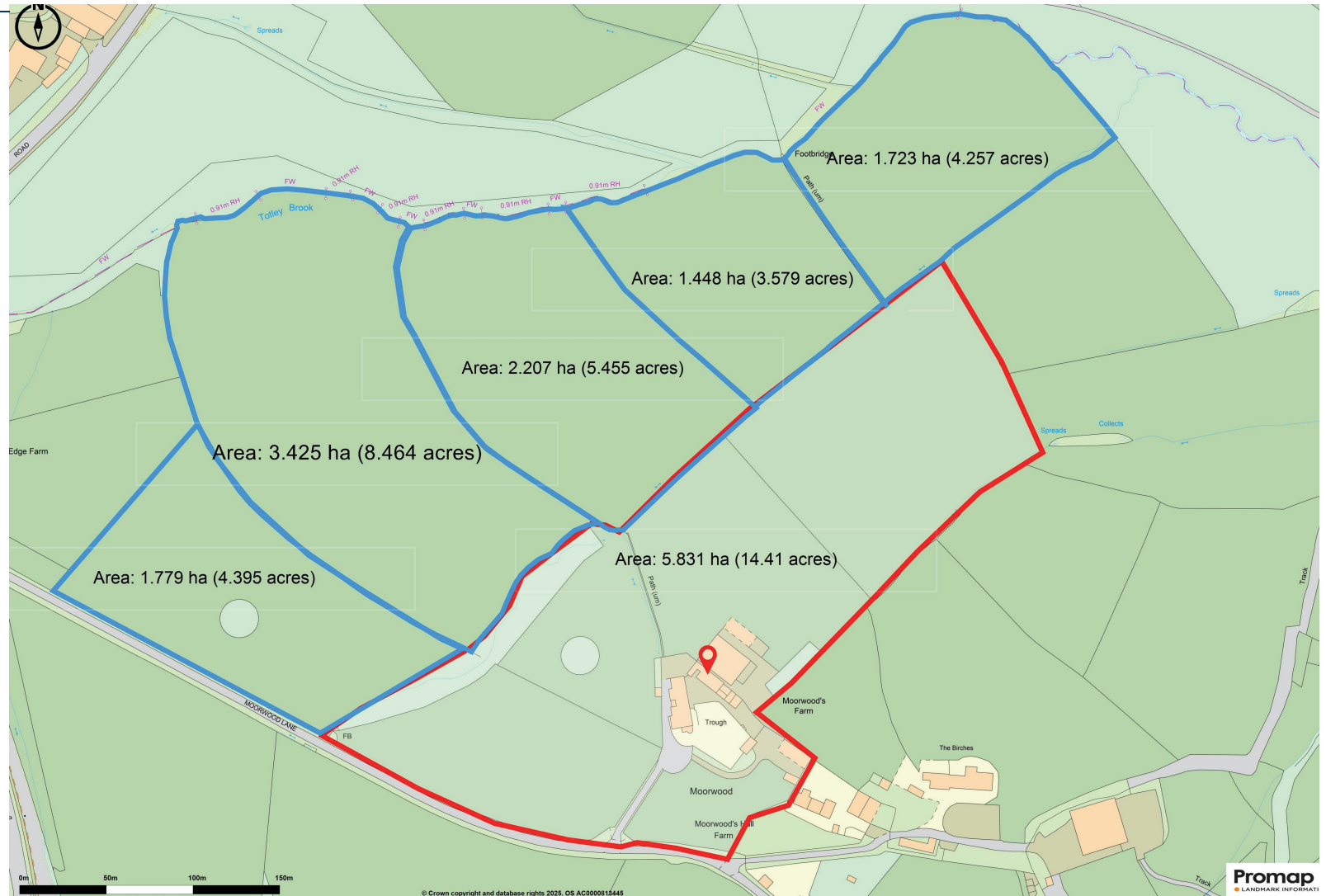
LAND & GARDENS

Moorwoods Farm is approached by a long wide driveway with an imposing entrance over a cattle grid and which divides into two, each leading to a traditional courtyard with extensive parking.

A lovely country garden wraps around the property with stone flagged terrace, extensive lawned areas and attractive well stocked borders creating a lovely setting with mature rhododendrons, azaleas, acer and lilac trees and shrubs.

Four paddocks surrounding the farm extending to approximately 14.41 acres with natural stream and spring water.

Further additional land of 26.15 acres available at £10,000 per acre offered at first refusal to the purchaser of Moorwoods Farm.



GENERAL REMARKS

Wayleave

There is a wayleave in respect of electric poles over the land and underground cable.

Planning

Potential Class Q permitted development for conversion of agricultural buildings into residential dwellings. Prospective purchasers should make their own enquiries.

Services

The property has an oil-fired central heating boiler, mains electricity and private drainage. The property is not connected to mains gas.



SELLER INSIGHT

How long have you lived at Moorwoods Farm?

This has been our much loved family home for almost 50 years.

What have you loved most about living at the property?

Bringing our children up in a fantastic home surrounded by open countryside. My son has also loved farming the land.

What will you miss most about living here?

The quietness and the spectacular views.

Why have you decided to move?

Now is the right time to downsize but we love the area so we are staying local.

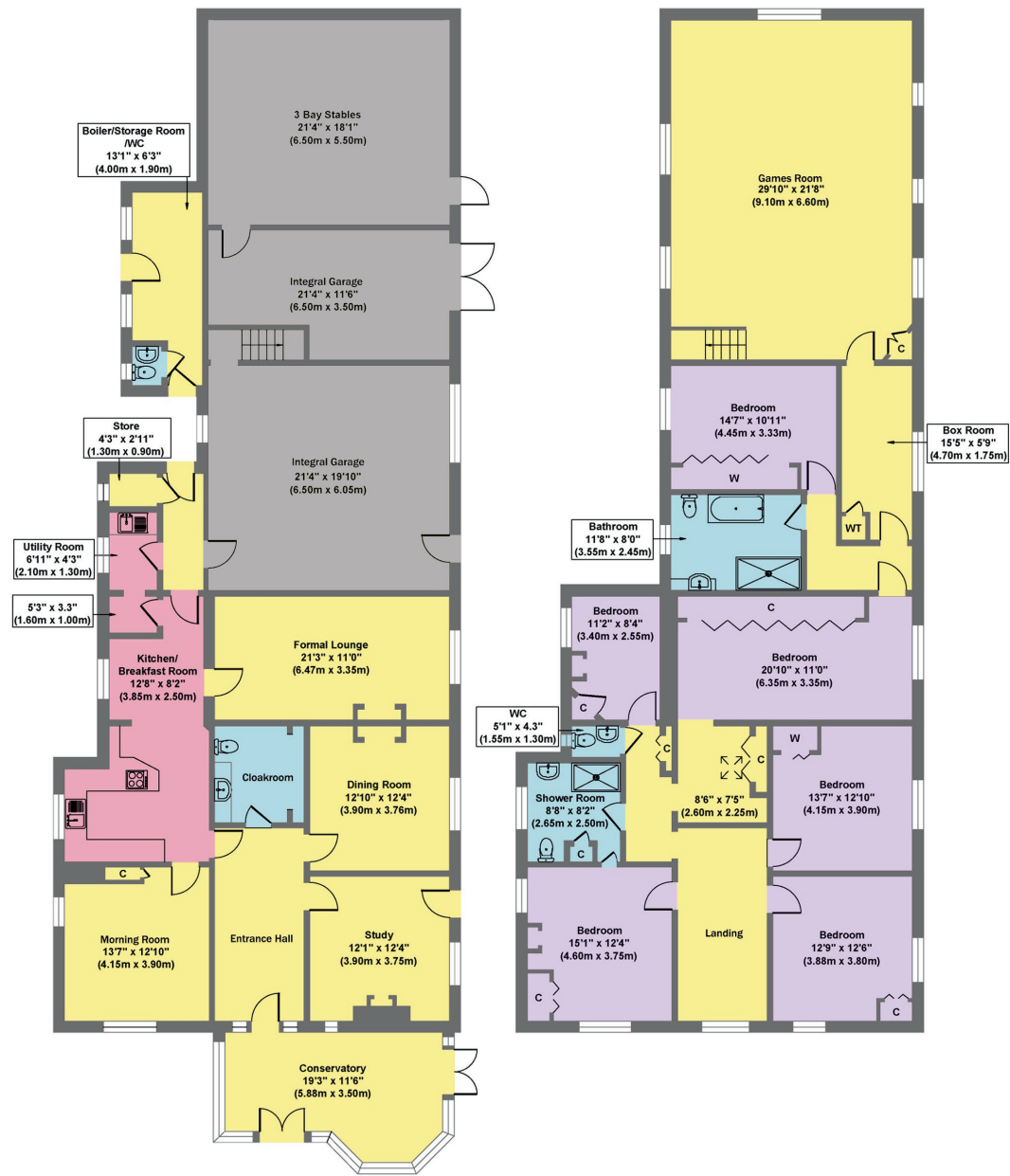
What do you love most about the location?

I love the location, being on the edge of the Peak District yet so close to amenities.

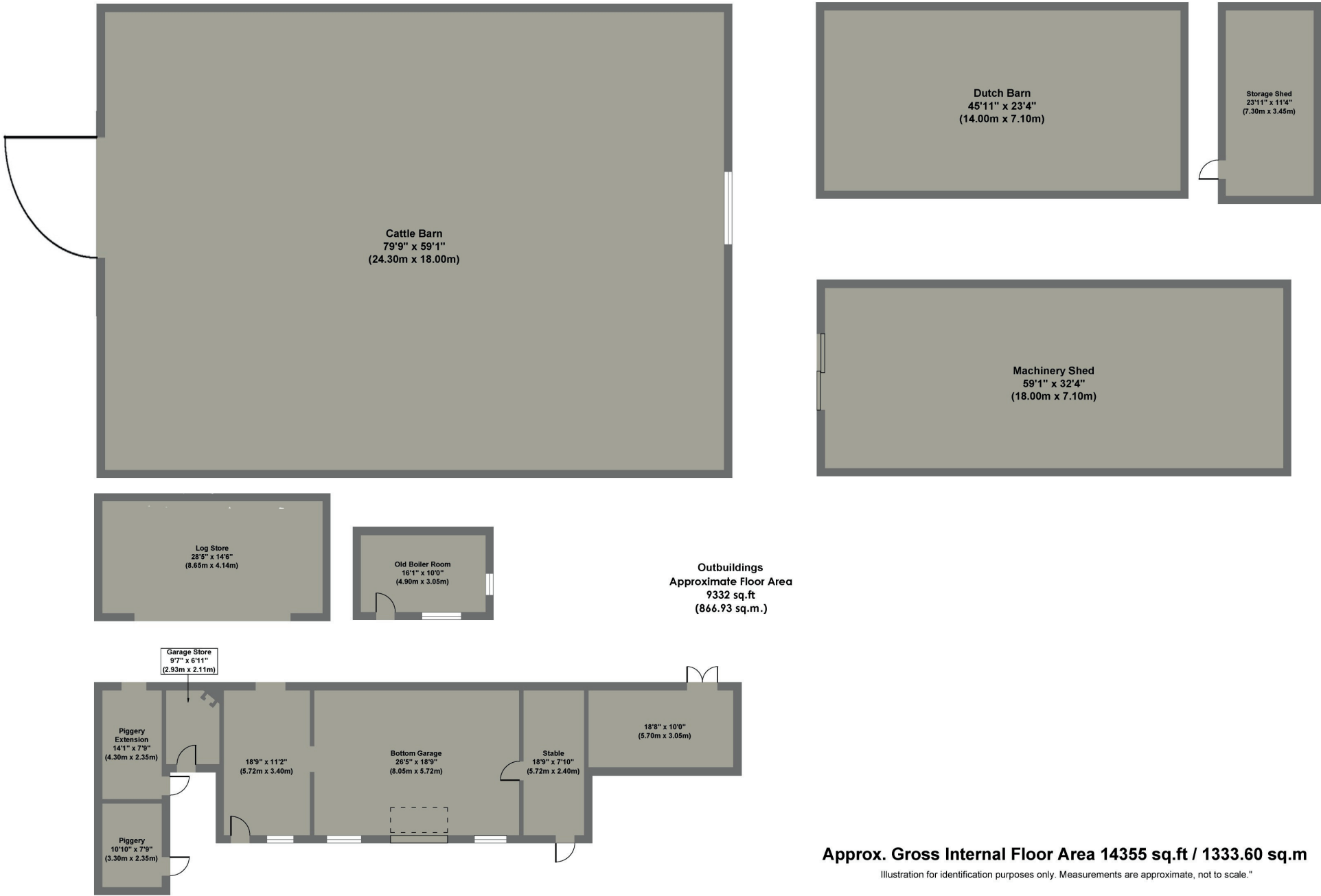
*The comments are the personal views of the current owner and are included as an insight into life at the property.



Moorwoods



Moorwoods Farm Outbuildings





For further information
please telephone 0114 268 3241

James Mee - james.mee@saxtonmee.co.uk
or Louise Downs - louise.downs@saxtonmee.co.uk

While we endeavour to make our sales particulars fair, accurate and reliable, they are only a general guide to the property and, accordingly, if there is any point, which is of particular importance to you, please contact the relevant office. SERVICES: The Agents have not tested any apparatus, equipment, fittings or services and so cannot verify they are in working order. The buyer is advised to obtain verification. MEASUREMENTS: Please note all the measurement details are approximate and should not be relied upon as exact. FLOORPLANS: Plans are for guidance purposes only and under no circumstances should they be relied upon for use in planning carpets and other such fixtures, fittings or furnishings.